

HandTop

SPECIFICATIONS

Model	HT3200UV	
Printhead	Kyocera KJ4A	
Quantity of printheads	4-10 pcs(Double rows)	
Resolution	360*3600dpi	
Print speed	Draft	142 m²/h
	Production	105 m²/h
	Quality	80m²/h
Max print width	1.6m	
Max media thickness	50mm	
Media type	Rigid and flexible flat materials	
Ink	Environmental friendly UV/LED curable ink(VOC free)	
Ink color	C、 M、 Y、 K、 W	
Machine size(L*W*H)	5.62*1.45*1.8 m	
Machine net weight	2460KG	
Machine gross weight	3330KG	
Power consumption	9.0 KW(20A)	
Power supply	400VAC. 50Hz 3P/N/PE	
RIP support	Caldera	
UV Curing	LED	
Interface	High Speed PCIE	
Environment	Seperated workroom in good cleaning and ventilated condition, avoid direct sunlight Temperature: 18° C – 30° C(64°F-86°F) Constant Humidity: 30%-70%	



HT3200UV

Create value for customers; be a world-leading manufacturer of smart digital printing equipment.

- Diversified product configuration and application solution can match the different demand in advertising, decorating, glass and other industries.
- Reliable stability combines the outstanding printing quality and speed performance.
- Top-level R&D team ensures prompt optimization and upgrade for new products and keep advanced technology in digital printing field.
- Strong worldwide after-sales service team quickly shoots your problem.
- High cost-value product brings you more business.

©Above information for reference only and subject to change without notice. Shenzhen Handtop Tech Co.,Ltd all rights reserved.



HT3200UV Hybrid Printer



HT 3200UV Hybrid

3.2m width MEDIA AREA



High-Speed Double Row Linear Motor Application

Top level UV printing quality and productivity from Handtop

Kyocera print head is known as a type of print head with high precision, fast speed and strong stability all across the print head industry. The perfect combination with Handtop printers as well as a second upgrade of double row linear motor application, once again elevates the performance of Kyocera print head to a new era, bringing the miracle of high precision super fast printing to advertising industry.



carriage head

- Realize high-quality printing of 105m²/h with 6 pass
- Realize 142m²/h high productivity printing with 4 pass

- Automatic negative pressure system
Using PCB board to control negative pressure, setting the negative pressure data from software.
- Kyocera Print Heads(one head with 2 colors)
Featuring variable dots, true grayscale imaging 4, 6, and 10pl .
- LED
Instant curing of UV ink for fast production. Flexible to be controlled during printing.

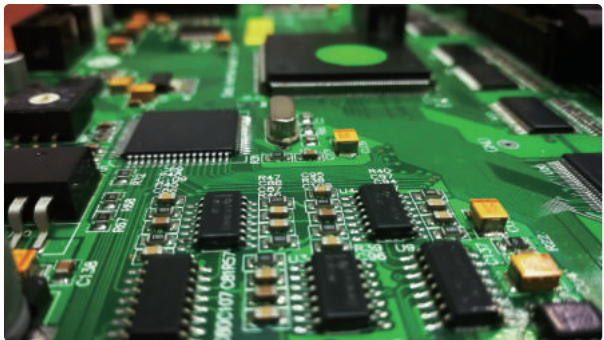
- Auto Height Detection System
Automatically detects the height of media up to 50mm thickness and calibrates print head distance for variable dot placement and image quality.
- The tension adjust device
The tension adjust device for the roller added,this device will help to prevent the feeding wrinkle.

Kyocera KJ4A Printhead

Nozzle quality : 2656
Physical Resolution : 2*300dpi
Pico-litter : Variable 4-6-10pl
Max Operating Frequency : 30Khz
Effective Print Width : 112.35mm



- Retractable Alignment Bar
Retractable alignment bar allows accurate and consistent media placement.
- Static suppression(optional)
Optional static suppression kit that eliminates static on the substrate.
- Emergency Stop Switches
Stop operation from any corner when the printer is in emergency.
- On Board Control Module
Rich functions, self-developed software, independent control module, efficient and convenient.
- Auto Belt Correction System
Auto belt correction system will detect the moving of belt, if the shifting is detected, the system will automatically adjust the moving of belt to the right way.



Self-developed, customized driver and PCB board



Industrialized wiring makes it more artistic